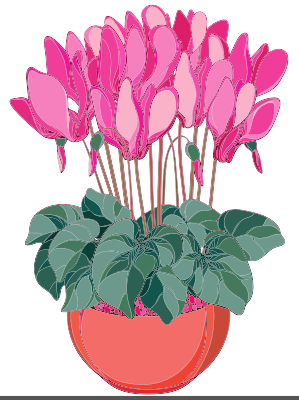
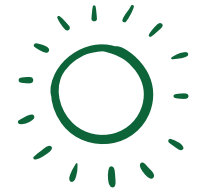


CYCLAMEN



Care Guide



Provide bright, indirect light if possible. Avoid direct sunlight. Cyclamen prefer cooler temps.



Water when the soil is dry to touch. Avoid water getting on the leaves and stems by placing in a bowl/sink of water and allowing the plant to soak up the water for around 10 minutes.



Cyclamen will go dormant after their bloom period has ended. Place in a cool and dim area and only water very slightly and seldomly to keep soil from completely drying out. It is normal for leaves to all "die" as the plant goes dormant. Bring out in 2 months and begin watering again and your Cyclamen should resprout and rebloom.



Cyclamen are long flowering houseplants with bright blooms and variegated foliage.

Keep out of reach of pets and children.